

SECTION A (40 Marks)
Compulsory: Attempt all questions.

Question 1

- (a) *Directions: Each question in this part is followed by four possible choices of answers. Choose the correct answer with key and write it in the space provided.*

[15]

- (i) Which one of the following pairs of cell organelle is involved in cell division?

- A nucleus and ribosome
- B nucleus and centrosome
- C centrosome and ribosome
- D centrosome and lysosome

Answer:.....

- (ii) Dorji and Dema are both heterozygous tall. The ratio of inheritance in their children will be

- A 2:2.
- B 2:3.
- C 3:1.
- D 3:2.

Answer:.....

- (iii) During stomatal transpiration, water is lost through the process of

- A imbibition.
- B diffusion.
- C cohesion.
- D osmosis.

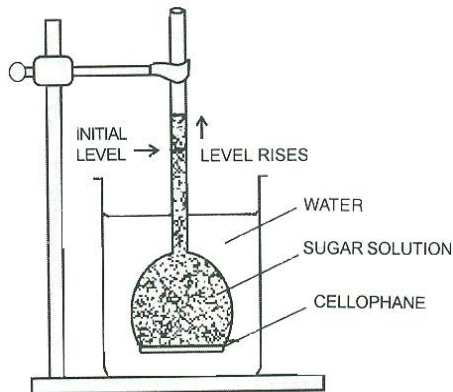
Answer:.....

- (iv) The light dependent phase of photosynthesis involves the

- A activation of chlorophyll + reduction of CO₂
- B activation of chlorophyll + splitting of water
- C splitting of water + reduction of CO₂
- D trapping of light + absorption of water

Answer:.....

- (v) The physiological process in plants demonstrated by the experimental set-up is



- A plasmolysis.
- B endosmosis.
- C exosmosis.
- D diffusion.

Answer:.....

- (vi) Which of the following is correct?

- A entry of light rays → focusing of image → nerve impulse from retina transferred to brain → brain interprets
- B entry of light rays → brain interprets → nerve impulse from retina transferred to brain → focusing of image
- C entry of light rays → nerve impulse from retina transferred to brain → focusing of image → brain interprets
- D entry of light rays → brain interprets → focusing of image → nerve impulse from retina transferred to brain

Answer:.....

- (vii) Which of the following is related to hormonal control?

- A does not regulate metabolism
- B effect is short lived
- C affects the growth
- D action is instant

Answer:.....

(viii) The correct course of change that occurs in a female ovary is

- A follicle → graafian follicle → ova.
- B graafian follicle → follicle → ova.
- C follicle → ova → graafian follicle.
- D ova → follicle → graafian follicle.

Answer:.....

(ix) Tenzing has a large family. Which of the following would be a disadvantage for his children?

- A comfortable shelter
- B better education
- C proper guidance
- D malnutrition

Answer:.....

(x) When baby Thinley Lhamo was nine months, she was given a measles vaccine. She would develop

- A specific innate immunity.
- B actively acquired immunity.
- C passively acquired immunity.
- D non-specific innate immunity.

Answer:.....

(xi) Which one of the following is the function of local bodies?

- A Extend relief help to victims of any natural calamities.
- B Look after the health problems of people of the world.
- C Look after the economic development of the world.
- D Removal and proper disposal of waste.

Answer:.....

(xii) The functions of internal organs is under the control of

- A medulla oblongata.
- B cerebellum.
- C cerebrum.
- D thalamus.

Answer:.....

(xiii) People who live in places which do not have proper water supply may suffer from

- A tuberculosis.
- B typhoid.
- C leprosy.
- D cancer.

Answer:.....

(xiv) Durga was advised to 'immediately wash with sufficient cold water and apply prescribed ointments on the point of injury' to treat her

- A insect bite.
- B snake bite.
- C bleeding.
- D burns.

Answer:.....

(xv) If the acrosome in a sperm is absent, it would not have the

- A energy to swim.
- B thrust to move forward.
- C enzyme to enter the ovum.
- D genetic materials to pass on to off-spring.

Answer:.....

(b) *Name the following:*

[4]

- (i) The solution in which the water entering the cell exceeds the water leaving the cell.
- (ii) The passing of characters from generation to generation.
- (iii) The cell division where only two daughter cells are produced.
- (iv) The surgical method of sterilization of a female.

.....
.....
.....
.....
.....

(c) **Fill in the blanks by using the words given in the bracket.** [4]
(progesterone, white matter, thylakoids, testosterone, gray matter, stroma, antibodies, antibiotics)

- (i)is a hormone produced by interstitial cells of testis.
- (ii) The convolutions in cerebrum is the layer of.....
- (iii) Chloroplast contain.....arranged in piles.
- (iv) On exposure to antigens.....are produced.

(d) **State whether the following statements are true or false. If false, rewrite the correct form of the statement by changing the underlined word/s only.** [6]

- (i) Hypersecretion of hormone from adrenal cortex causes Addison's disease.

.....
.....
.....

- (ii) Cells that have lost their water content are said to be plasmolysed.

.....
.....
.....

- (iii) Adrenalin is a hormone which prepares the body to meet emergency situations.

.....
.....
.....

- (iv) Playing a guitar is an example of simple reflex.

.....
.....
.....

- (v) Phloem is the water conducting tissue in plants.

.....
.....
.....

(vi) Car sickness is due to stimulation of fluid in cochlea.

.....

.....

.....

(e) *Match each item under Column A against the most appropriate item in Column B. Rewrite the correct matching pairs in the spaces provided.*

[5]

Column A	Column B
(i) Guttation (ii) Natality (iii) Antiseptic (iv) Histone (v) Amniotic fluid	a. death rate b. DDT c. shock absorber d. hydathode e. birth rate f. lenticel g. lysol h. nucleosome

.....

.....

.....

.....

.....

(f) *Differentiate between each of the following pairs based on what is given in the bracket in each table that follows:*

[4]

(i) Cell wall and plasma membrane (*composition*)

Cell wall	Plasma membrane

(ii) Character and trait (*definition*)

Character	Trait

(iii) Stomatal transpiration and cuticular transpiration (*site of transpiration*)

Stomatal transpiration	Cuticular transpiration

(iv) Testis and ovary (*gamete formation*)

Testis	Ovary

(g) **Answer the following questions:**

(i) If there were only non-green plants, all life on earth would come to an end. Justify.

[1]

.....

.....

.....

.....

(ii) Very poor literacy rate has led to population explosion in Shangrila. How does illiteracy contribute to increase in population?

[1]

.....

.....

.....

.....

.....

.....

SECTION B (40 Marks)
Attempt any four questions

Question 2

(a) *Answer the following questions:* [5]

(i) What is a cell organelle?

.....

.....

.....

(ii) How does transpiration help in developing the suction force in plants?

.....

.....

.....

.....

(iii) Explain the formation of chiasmata during cell division.

.....

.....

.....

.....

(iv) Why is the blind spot in human eye also known as an area of no vision?

.....

.....

.....

.....

.....

- (v) New discoveries in medical science led to a rapid growth in population during the twentieth century. Do you agree?

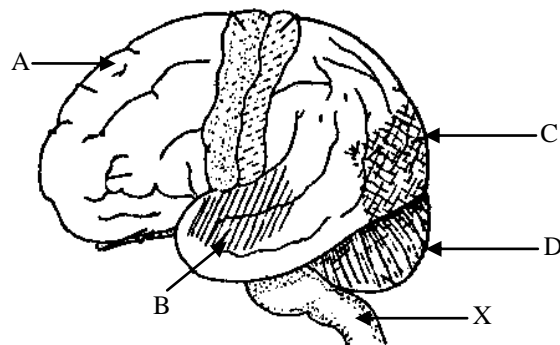
.....

.....

.....

.....

- (b) Study the diagram given below and answer the questions that follow:



- (i) Write the functions of the parts A, B, C, D.

[2]

.....

.....

.....

.....

.....

- (ii) What are the *two* important functions of the part marked X.

[2]

.....

.....

.....

.....

.....

- (iii) A person is believed to be intelligent, if he or she has higher number of convolutions in the brain. Justify the statement. [1]

.....

.....

.....

.....

.....

Question 3

- (a) A pure breeding tall pea plant is cross pollinated with a pure breeding dwarf pea plant.

- (i) Give the genotype and phenotype of F1 generation. [1]

.....

.....

- (ii) Find the phenotypic and genotypic ratio of F2 generation obtained by self pollination from F1 generation. [2]

.....

.....

.....

.....

.....

.....

.....

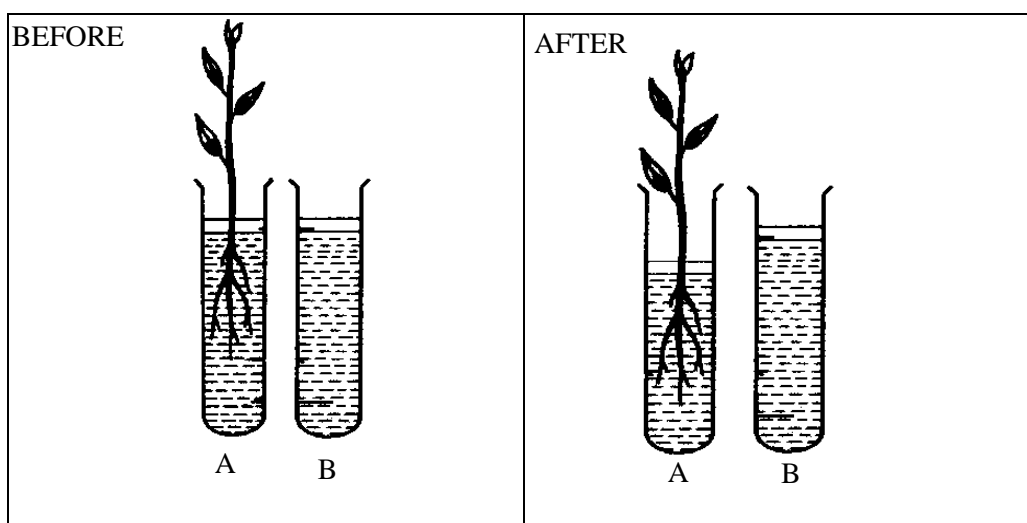
- (iii) Draw a pedigree chart to support your answer. [1]

- (b) State **one** difference between cell division in an animal cell and a plant cell in the table given below:

[1]

Animal cell	Plant cell

- (c) The experiment below shows a certain phenomenon occurring in plants.



- (i) What is the aim of the experiment?

[1]

.....

.....

.....

- (ii) What difference will you observe in test tubes A and B after 1-2 hours?

[1]

.....

.....

.....

.....

.....

(iii) Write a suitable explanation for the observation concluded in question (ii). [2]

.....

.....

.....

.....

.....

.....

(iv) Why is the water covered with oil? [1]

.....

.....

.....

.....

Question 4

(a) With references to the human reproductive system, answer the following questions:

(i) Explain the process of ovulation. [1]

.....

.....

.....

.....

.....

(ii) Why does a full grown human embryo respire instead of breathing? [2]

.....

.....

.....

.....

.....

.....

(iii) Which part of the female reproductive organ is the main site for fertilization? [1]

.....

(iv) List any *two* changes which occur in a male during puberty. [1]

.....

.....

.....

.....

.....

(b) (i) How does the skin protect our body from infections? [1]

.....

.....

.....

.....

.....

(ii) What is cytokinesis? [1]

.....

.....

.....

(iii) Why is the mitochondria known as the power house of a cell? [1]

.....

.....

.....

(iv) Briefly explain population density. [1]

.....

.....

.....

(v) When should a casualty be provided with the first aid? [1]

.....

.....

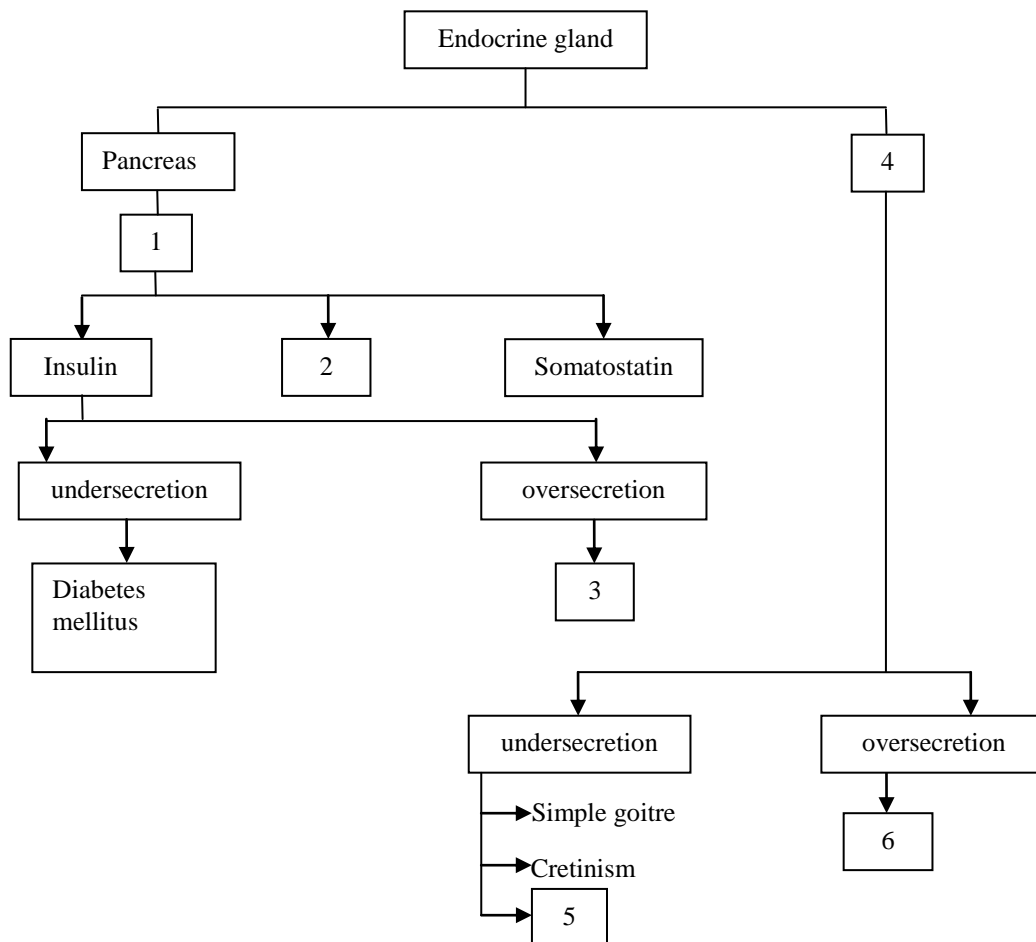
.....

.....

Question 5

- (a) (i) Complete the following flow chart. Write the appropriate terms for the parts numbered 1 to 5 in the space provided below.

[3]



.....

.....

.....

.....

.....

.....

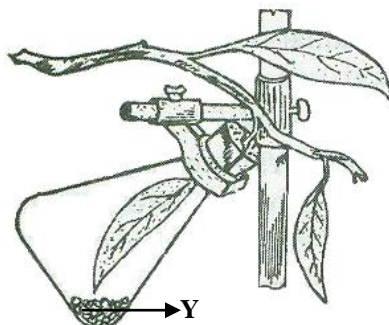
- (ii) Before making a speech to a large audience, your mouth dries up and heart rate increases. What causes these changes?

[2]

.....

.....

-
-
- (b) Given below is the diagram of an experimental set-up.



- (i) What is the purpose of this experiment? [1]

.....

.....

.....

- (ii) Define de-starching. [1]

.....

.....

.....

- (iii) Identify the substance marked 'Y' and mention its function. [2]

.....

.....

.....

- (iv) What conclusion would be drawn if water is used instead of substance 'Y'? [1]

.....

.....

.....

.....

.....

Question 6

(a) Draw a neat diagram of a stoma and label the following parts: [3]

- (i) chloroplast
- (ii) nucleus
- (iii) guard cell
- (iv) cell wall

(b) Between the two international bodies, Red Cross and WHO, which is more important to our country? Support your answer. [2]

.....

.....

.....

.....

.....

.....

(c) Give reasons for the following: [5]

- (i) Cells are generally small in size.

.....

.....

.....

.....

(ii) Meiosis produces gametes for sexual reproduction.

.....

.....

.....

.....

(iii) If you touch a *mimosa pudica* plant, its leaves will rapidly droop.

.....

.....

.....

.....

(iv) The blood of the embryo comes in close contact but never mingles
with the blood of the mother.

.....

.....

.....

.....

(v) The green revolution contributed to the sharp rise in population in the
recent past.

.....

.....

.....

.....

Question 7

(a) (i) Explain **two** advantages for having a central canal in the spinal cord. [1]

.....

.....

.....

.....

.....

- (ii) Voluntary and involuntary are the two types of actions which occur in our body. Choose one and state why it is important. [2]

.....

.....

.....

.....

- (iii) Explain the following disadvantages of large families. [1]

1. Insufficient education
2. Children neglected socially

.....

.....

.....

.....

.....

.....

- (iv) Explain any **one** category of vaccines. [1]

.....

.....

.....

- (b) Write **one** difference between the following pairs in each of the given tables: [5]

- (i) Vaccination and immunization

Vaccination	Immunization

(ii) Birth rate and death rate

Birth rate	Death rate

(iii) Penicillin and streptomycin

Penicillin	Streptomycin

(iv) Renewable resources and non-renewable resources

Renewable resources	Non-renewable resources

(v) Acquired immunity and innate immunity

Acquired immunity	Innate immunity

Roughwork