

SECTION A [10 Marks]

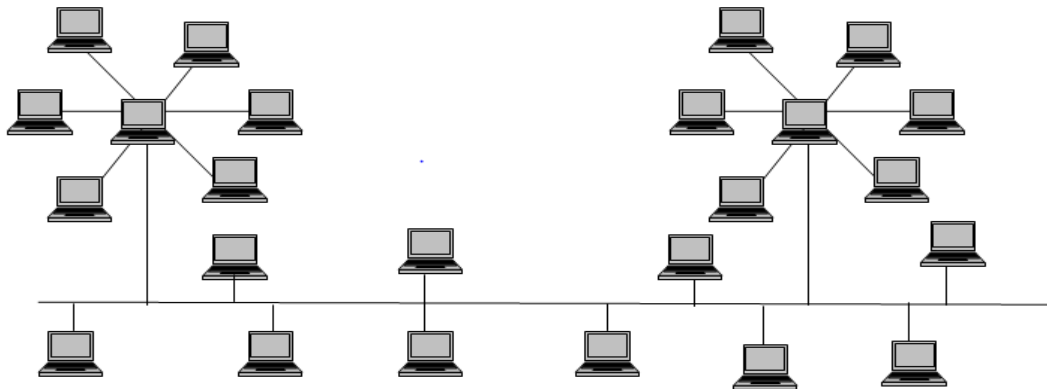
Answer ALL the Questions

Question 1

[1x10]

Directions: For each question, there are four alternatives: A, B, C and D. Choose the correct alternative and circle it. **DO NOT** circle more than **ONE** alternative. If there are more than one choice circled, **NO** score will be awarded.

1. A collection of related web pages, including multimedia content, typically identified with a common domain name is
 - A web server.
 - webpage.
 - web address.
 - website.
2. Network topologies can be combined to form a larger network. The figure below shows a hybrid network formed by combining two types of network topology.



Identify the two types of network topology used in this hybrid network.

- A Star and Ring
 - Bus and Ring
 - Mesh and Bus
 - Bus and Star
3. Which of the following is **NOT** a characteristic of a worm?
 - Replicate themselves from system to system without the use of host file.
 - Requires infected host file to spread.
 - Contains malicious code so that when triggered it cause the loss of data.
 - Releases a document that already has the worm inside the document.

4. Which of the following preventive security measures protects data from getting hacked?

- i) Identification
- ii) Authorization
- iii) Prohibition
- iv) Authentication

- A i, ii, & iii
- B i, ii, & iv
- C ii, iii, & iv
- D i, iii, & iv

5. Information stored in computer is in digital form, whereas information transmitted over telephone line is in analog form. The device that enables the computer to transmit information over telephone line is

- A hub.
- B modem.
- C switch.
- D router.

6. Dorji wants to send a confidential questionnaire to a group of people. Each person receiving the email should not know who are the other recipients of the email. In which field should he type the email addresses of the recipients?

- A Subject
- B Bcc
- C Cc
- D To

New Message	
To	
Cc	
Bcc	
Subject	
--	

7. Meto is surfing the Internet and she wants to expand the browser to fill up the whole screen. Which of the following menu will help her to customize screen display?

- A View
- B Edit
- C File
- D Tools

8. What does “x” in the figure stand for?

- A Telecom code
- B Country code
- C Organization
- D Commercial



9. The correct order in which video conference happens is

- i) The converted video signals are transmitted over the media through modem to the destination.
- ii) Web Camera captures the video.
- iii) When the converted video signals reach to the destination, it converts back to the video which is projected on the screen.
- iv) Video is converted into compressed digital signals.

- A ii, iii, iv & i
- B iii, iv, i & ii
- C ii, iv, i & iii
- D iv, i, ii & iii

10. “It is the function of antivirus software that isolates infected file on a computer hard disk but does not remove the virus”. Which of the following option suits the above phrases?

- A Repair
- B Delete
- C Exclude
- D Quarantine

SECTION B [10 Marks]

Answer ALL questions

Question 2

[1x10]

Direction: *Fill in each blank with appropriate words or phrases*

- a) The protocol which helps a user to login to a remote computer and work as if he/she was directly connected to that computer is called _____.
- b) The _____ provides a convenient place to store contact information of all your friends and relatives.
- c) The illegal distribution or copying of software for personal or business use is termed as _____.
- d) A guideline to be followed by all the mailing list members when sending messages. This conventional rule for the correct behavior on the internet is called as _____.
- e) Ask, Yahoo, Bing, Excite and AOL are the examples of _____.
- f) Indexes of URLs, Keywords, and Links are the component created by _____, also known as spiders.
- g) Pema has sent the information to karma in the form codes to protect the data. Karma reads the information by converting the code to the plain text. The process of converting the code to plain text is _____.
- h) Dorji can send a copy of a message received from his teacher to his friend using _____ feature of the email program.
- i) A _____ server is a security system designed to monitor and control the flow of information between Intranet and Internet.
- j) The protocol which helps in receiving or sending files from one computer to another computer in a network is called as _____.

SECTION C [10 Marks]

Answer ALL the Questions

Question 3

[2x5]

- a) *“Internet has made everyone’s life very easy.”* State **TWO** reasons to support your answer.

- b) *“Tshering Dorji is a senior manager in one of the banks in Gelephu. Ever since he joined bank, he has been using computer for his work. Recently he started suffering from back ache, wrist pain and loss of strength and coordination in the hands which are the symptoms of Repetitive Strain Injury (RSI)”*. You will soon be joining the bank as a cashier and major portion of your work will require the use of computer. List **FOUR** preventive measures you will take to prevent RSI.

- c) Nima wants to send a binary file to Dawa. Persuade Nima not to send the file in that format by giving **TWO** reasons.

- d) Bhutan Airways has two offices, one in Bumthang and another one in Paro. The company management wants to set up a network between these offices. You as an ICT officer of the company is instructed to draw a draft network plan for the connection. Give **TWO** reasons for network type you have selected.

- e) Differentiate between Boolean Search operators “**AND**” and “**OR**” with **ONE** example each.
