



STUDENT NAME : _____
SCHOOL NAME : _____
DZONGKHAG : _____

ROLL NO : _____
SECTION : _____
GENDER : _____

SOCIAL STUDIES

Reading Time: 15 Minutes

Full Marks: 50

Writing Time: One Hour

Year: 2021

For Teachers' use only

Question	Q1	Q2	Q3	Q4	Q5			Q6						
					I	II	III	I	II	III	IV	V	VI	VII
Mark	20	5	5	5	2	1	2	1	2	2	1	2	1	1
Mark scored														
Initial														
Total														

This booklet contains 10 pages

IMPORTANT: Turn over to read the instructions

READ THE FOLLOWING INSTRUCTIONS CAREFULLY:

1. In this booklet you will find **SIX** questions. You must answer all the questions.
2. Answers to **ALL** the questions must be written neatly in the spaces provided.
3. Do **not** write during the first **fifteen minutes**. This time is to be spent on reading the questions.
4. You will have **ONE** hour to answer all the questions.
5. You will be **NOT** allowed to leave the examination room before the completion of the stipulated time.

(First **FIFTEEN** minutes could also be used by the teachers on duty to explain the instructions)

Question 1

[20]

Direction: For each question, there are four alternatives: A, B, C and D. Choose the correct alternative and circle it. Do not circle more than ONE alternative. If there is more than one choice circled, NO score will be awarded.

- I. The surface of the Earth is covered by lithosphere and hydrosphere. What percent of the earth surface is covered by the hydrosphere?
- A 71%
 - B 72%
 - C 73%
 - D 75%
- II. Dorji and his family moved from Trashigang to Punakha. The population of Punakha increased by 10 people. This change is caused by
- A birth rate.
 - B migration.
 - C emigration.
 - D immigration.
- III. Karma is 18 years old and now eligible to vote in the next local election. What type of person should he vote for?
- A strong and caring
 - B wise and handsome
 - C wise and responsible
 - D friendly and educated
- IV. Respecting elders, saying prayers before meals, making offerings to god and goddess, showing love and kindness and playing traditional games are some examples of
- A preservation of culture.
 - B preservation of nature.
 - C protecting the country.
 - D disrespecting the culture.
- V. Misuse of power and bribery for personal gains are against the law of our country. This type of social problem is called
- A violence.
 - B bullying.
 - C corruption.
 - D favoritism.

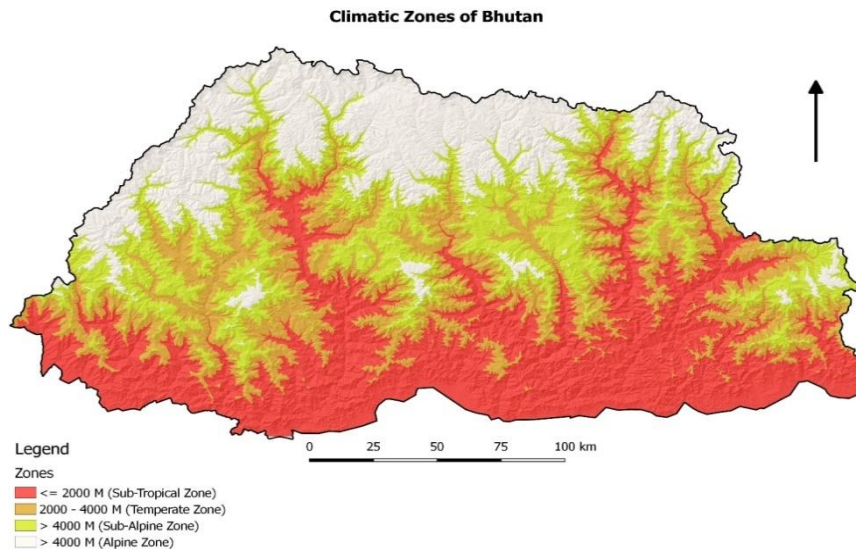
- VI. Following are the negative impacts of hydropower plant **EXCEPT**
- A deforestation.
 - B electricity production.
 - C disturbance of land forms.
 - D disturbance of the animal habitat.
- VII. 'It is a type of flood that occurs when a glacier lake overflows. Such floods are caused along the river valleys where river sources begin from glacier lakes.'
- The above statement best describes
- A landslides
 - B melting of glacier
 - C dam water outburst flood
 - D glacial lake outburst flood
- VIII. Which of the following means of communication is commonly used in Bhutan?
- A mobile
 - B wireless
 - C computer
 - D fax machine
- IX. The following human activities are influenced by climatic conditions of a place **EXCEPT**
- A The monsoon wind brings heavy rainfall.
 - B People prefer to live in a moderate climate.
 - C People designed their houses according to the climatic condition.
 - D People wear their clothing accordingly to the climatic condition of that place.
- X. Dechen coordinated the reconstruction of a temple in her village by collecting funds from people. This initiative could help in
- A protecting our country.
 - B promoting our language and rituals.
 - C preserving and promoting our culture and traditions.
 - D preserving our country's independence and sovereignty.
- XI. 'It is the form of government in which power and civic responsibilities are exercised by the entire citizen through freely elected representatives'.
- Which form of government did Bhutan adopt from the year 2008?
- A Republic Government
 - B Constitutional Monarchy
 - C Presidential Government
 - D Democratic Constitutional Monarchy

- XII. Lightning is a dangerous disaster which is experienced in the southern parts of Bhutan. If you were in Samtse, which precautionary measure would you adopt?
- A staying under a tree
 - B staying in the open ground
 - C staying near an electricity pole
 - D staying inside the house and turning off electrical switches
- XIII. Increase in the number of cars causes traffic congestion which leads to motor accidents and air pollution.
Which of the following ways would you use to overcome the above problems?
- A use a private car
 - B use air transport
 - C use public transport
 - D use railway transport
- XIV. Sonam cultivates land, looks after cattle and collects wild fruits from the forest.
- These activities can be classified under
- A service activity.
 - B tertiary activity.
 - C primary activity.
 - D secondary activity.
- XV. What would happen if the earth rotates from east to west?
- A The sun and moon will rise in the east.
 - B The sun and moon will set in the west.
 - C The sun and moon will set in the north.
 - D The sun and moon will appear to rise in the west.
- XVI. Increase in population has brought many changes in the environment. Which of the following best supports the statement?
- I Growth of population has increased the wastes.
 - II Growth of population has increased the food supply.
 - III Growth of population has increased the forest coverage.
 - IV Growth of population has increased the need of resources.
- A I & II
 - B I & III
 - C I & IV
 - D III & IV

XVII. The attitude of young people wanting to live in towns for better opportunities and facilities would lead to

- A scarcity of vandalism and theft
- B decrease of crime and violence
- C increase in resources and employment
- D scarcity of resources and unemployment

XVIII. In the map given below, which climatic zone covers the maximum area?



- A Alpine Zone
- B Temperate Zone
- C Sub –Alpine Zone
- D Sub-Tropical Zone

XIX. Rivers in Bhutan are not suitable for transportation. This is because

- A of the small size of the country.
- B river transportation is expensive.
- C the rivers are narrow and fast flowing.
- D to preserve our pristine environment.

XX. Karma wants to open a new hair cutting shop in the town. What can Karma do to get more income?

- A make it easier to book services
- B employ more number of helpers
- C limit your customers to a minimum
- D buy more number of scissors and combs

Question 2

Direction: Fill in the blanks with the appropriate word(s).

<p>a. If Karma celebrates his birthday on 29th February 2020. His next birthday would be celebrated in the year _____.</p> <p>b. In a place 200 people died while 90 babies were born. The population of a place would be changed by _____ people.</p> <p>c. As a Bhutanese, you have rights such as freedom of speech, movement and to vote. All these are our _____ Rights.</p> <p>d. Blocking emails, saving messages and informing relevant people about abusers are some examples for the prevention of _____ bullying.</p> <p>e. If your father is planting trees and reducing the use of fossil fuels, he is helping in the prevention of _____ change.</p>	
---	--

Question 3

Direction: Match each item in column I against the most appropriate item in column II. Write the correct alphabet in the space provided in column III.

Column I		Column II		Column III
i.	The average weather conditions of a place which last over a long period of time	a.	trade	
ii.	Aja Ney	b.	altitude	
iii.	Relocation of child for forced labour and sex	c.	climate	
iv.	Exchange of goods and services between people and countries	d.	child trafficking	
v.	The height of a place above the sea level	e.	Paro	
		f.	latitude	
		g.	Mongar	

Question 4

Direction: Write TRUE or FALSE against each statement in the brackets.	
a. The spinning of the Earth on its axis is called rotation. ()	
b. Climate does not determine the type of animals' which people rear and the crops that farmers grow. ()	
c. Prime Minister and Ministers wear blue kabney with patang or goentag. ()	
d. Sudden accidents that cause great damage or loss of life and property is called disaster. ()	
e. Transportation and communication have improved the lives of the people. ()	

Question 5

- I. When there is an increase in population, there is an increase in the use of resources. [2]
Give **TWO** reasons to support the statement.

- II. Bhutan is also affected by **Covid-19** pandemic like the rest of the world. Our leaders have managed in containing the pandemic. Write **ONE** sentence thanking our King. [1]

- III. Why is climate change a problem? Give **TWO** reasons. [2]

Question 6

- I. Why is the Earth considered as a unique planet? Support your answer with **ONE** reason.

[1]

- II. Due to modernization, cultural change is happening in Bhutan. What **TWO** points would you suggest to promote and preserve our culture?

[2]

- III. Dolma's parents are always quarrelling and fighting. How would you solve this problem?

[2]

- IV. Share any one message of His Majesty the King that you have heard on the radio or from watching BBS television.

[1]

V. There are Economic activities and Non-Economic activities. Which activities would you like to carry out? List **TWO** such activities. [2]

VI. 'Glaciers on the mountains are good and at the same time bad.' Do you agree or disagree? Give **ONE** reason to support your answer. [1]

VII. Write **ONE** difference between climate and weather. [1]
